

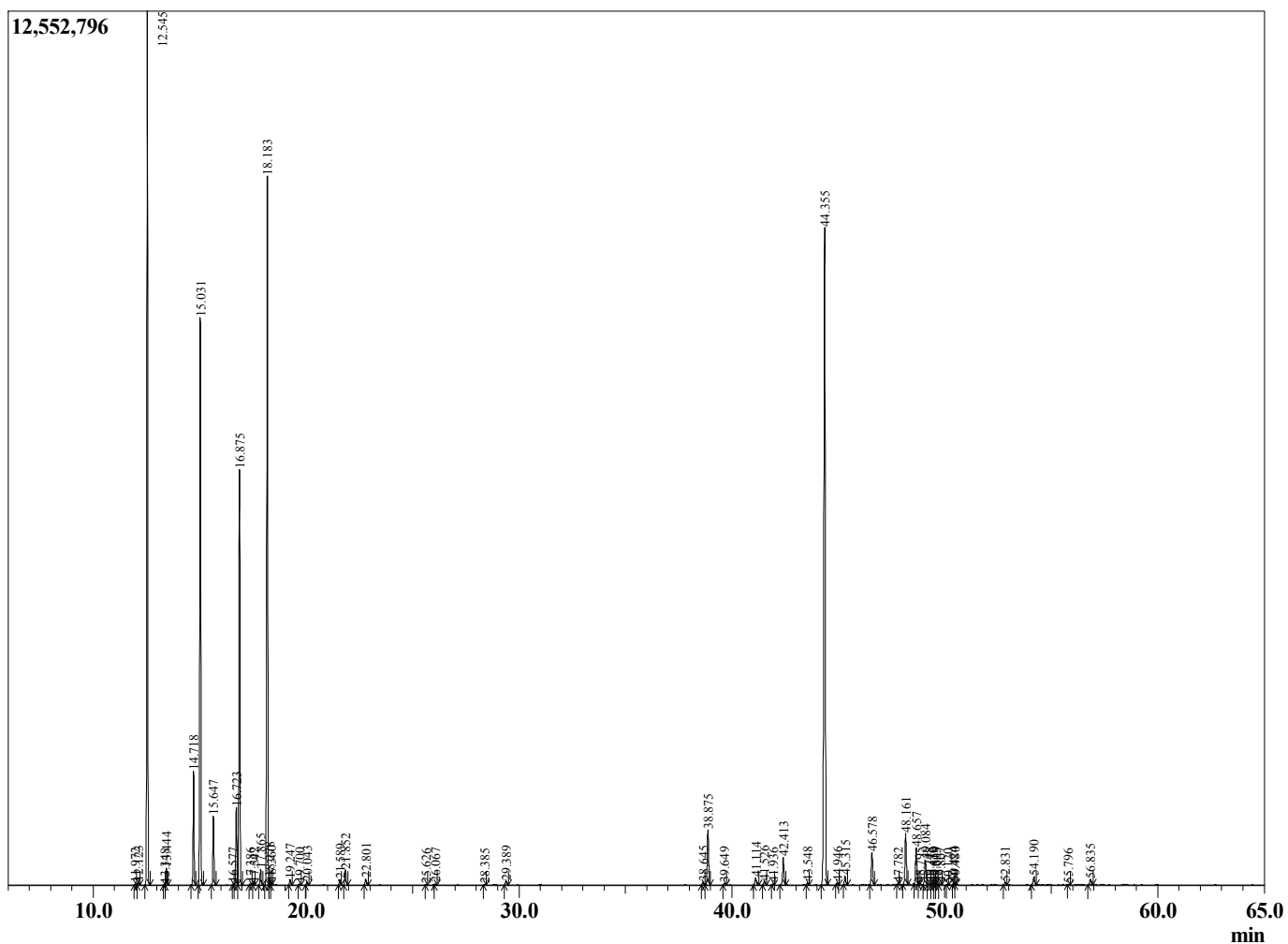
Sample Information

Sample Type : Essential Oil  
 Sample Name : Piper nigrum

Pepper Black  
 Lot# MAN27-NT  
 Country: Madagascar



Chromatogram Piper nigrum



R.Time	Name	Area%
11.972	Tricyclene	0.02
12.123	alpha-Thujene	0.07
12.545	alpha-Pinene	18.94
13.348	alpha-Fenchene	0.01
13.444	Camphene	0.37
14.718	Sabinene	2.62
15.031	beta-Pinene	13.27
15.647	Myrcene	1.64
16.577	Pseudolimonene	0.02
16.723	alpha-Phellandrene	1.94
16.875	3-Carene	10.13
17.386	alpha-Terpinene	0.04
17.542	ortho-Cymene	0.03
17.865	para-Cymene	0.39
18.183	Limonene	18.26
18.278	beta-Phellandrene	0.15
18.360	1,8-Cineole	0.06
19.247	(E)-beta-Ocimene	0.13
19.700	Unidentified	0.03
20.043	gamma-Terpinene	0.07
21.589	Isoterpinolene	0.14
21.852	Terpinolene	0.41
22.801	Linalool	0.17
25.626	trans-Pinocarveol	0.01
26.067	Camphor	0.02
28.385	Terpinen-4-ol	0.02
29.389	alpha-Terpineol	0.12
38.645	Bicycloelemene	0.08
38.875	delta-Elemene	1.75
39.649	alpha-Cubebene	0.05
41.114	Isoledene	0.24
41.526	alpha-Copaene	0.12
41.936	cis-beta-Elemene	0.03
42.413	trans-beta-Elemene	0.89
43.548	alpha-Gurjunene	0.06
44.355	trans-beta-Caryophyllene	21.71
44.946	gamma-Elemene	0.06
45.315	alpha-Guaiene	0.28
46.578	alpha-Humulene	1.04
47.782	trans-Cadina-1(6),4-diene	0.02
48.161	Germacrene D	1.64
48.657	beta-Selinene	1.19
48.795	Unidentified	0.03
49.084	alpha-Selinene	0.85
49.248	Unidentified	0.03
49.430	alpha-Bulnesene	0.03
49.519	delta-Amorphene	0.05
49.605	(E,E)-alpha-Farnesene	0.03
49.807	beta-Bisabolene	0.04
50.120	gamma-Cadinene	0.01
50.424	delta-Cadinene	0.07
50.480	alpha-Panasinsene	0.03
52.831	Germacrene B	0.08
54.190	Caryophyllene oxide	0.31
55.796	Humulene epoxide	0.01
56.835	Guaia-6,10(14),diene-4beta-ol	0.18

R.Time Name

Area%  
100.00